

BROOKS PERFORMANCE HALL

CLEMSON UNIVERSITY
CLEMSON, SOUTH CAROLINA



ACOUSTICS CONSULTANT:	Cavanaugh Tocci Associates, Inc.
ARCHITECT:	Sert, Jackson and Associates, Architects Neal Prince + Partners Architects
OWNER:	Clemson University
THEATER CONSULTANT:	Donald Soule
ASSOCIATE CONSULTANT, ACOUSTICS:	Egan Acoustics
ASSOCIATE CONSULTANT, AUDIO SYSTEMS:	David H. Kaye
CONSTRUCTION COST:	9.7 Million USD - Entire Facility 3.0 Million USD - Performance Hall
COMPLETION DATE:	1994

In late May 1989, Sert Jackson, and Associates, Architects of Cambridge, Massachusetts was judged winner of an open competition for the design of the Performing Arts Center for Clemson University. The original proposal for the competition project was refined during design phases on the basis of a detailed architectural program developed with university faculty and staff, the campus architect, and project consultants. A two-year accelerated construction schedule was completed to allow occupancy of the building for the academic semester in September 1993.

The theater/performance hall with adjacent black box experimental theater, scenery workshop, and theater arts support facilities, is the heart of the Brooks Center. The hall seats 1,006, including 295 in the balcony. The stagehouse is fully rigged to handle theatrical scenery and the ceiling elements of an orchestra enclosure. Moveable wall towers complete the stage enclosure, which can accommodate works for full orchestra plus chorus or smaller recitals. An orchestra pit accommo-

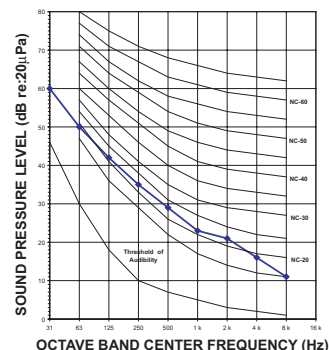
dates ensembles for musicals, and with hydraulic lifts, can provide an extended stage or additional main floor seating. The hall serves the wide range of theatrical and musical performance needs of the university.

Finish materials are predominately sound reflective, (wood, masonry, gypsum board), with fully upholstered seating and carpeted aisles. An open wood grid ceiling with sound reflective infill panels at the forward (stage) end, along with vertical wood louver fins opening to the side entrance corridors at the main floor and balcony levels, add to the effective acoustical cubic volume of the hall. Adjustable, sound-absorbing banner boxes concealed in the truss space permit approximately 0.4 seconds of variation in the reverberation time of the space. The banners are fully extended for most theatrical performances and retracted for orchestral and choral events. After nearly a decade of use, the Clemson community is very happy with the acoustics of Brooks Performance Hall.

CRITICAL DATA

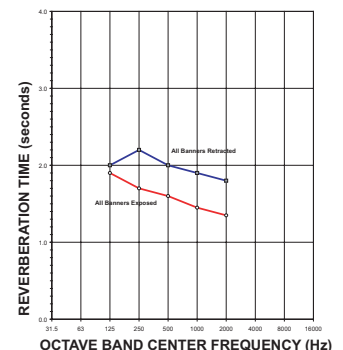
Seating Capacity	1,006
Room Volume	550,000 ft ³
Stage Area	2,200ft ²
Volume / Seat	700 ft ³
Reverberation Time, Unoccupied @ 500 Hz	
Banners Retracted	2.0 sec
Banners Exposed	1.65 sec
Noise Level	< NC-25

BACKGROUND NOISE LEVEL



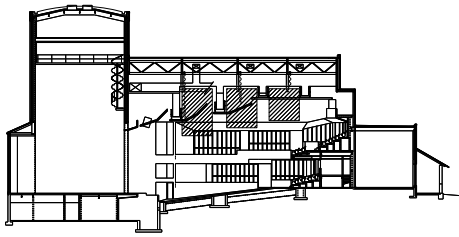
REVERBERATION TIME

Unoccupied

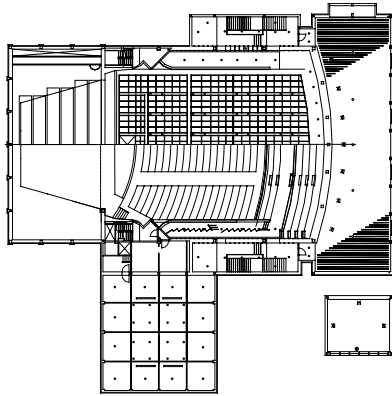


BROOKS PERFORMANCE HALL

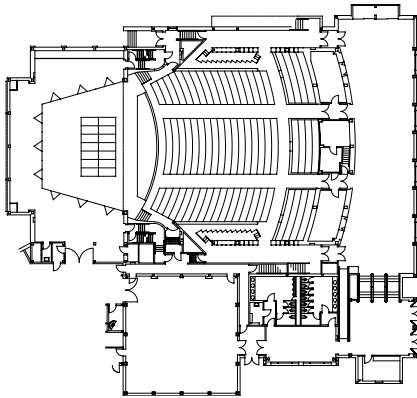
CLEMSON UNIVERSITY
CLEMSON, SOUTH CAROLINA



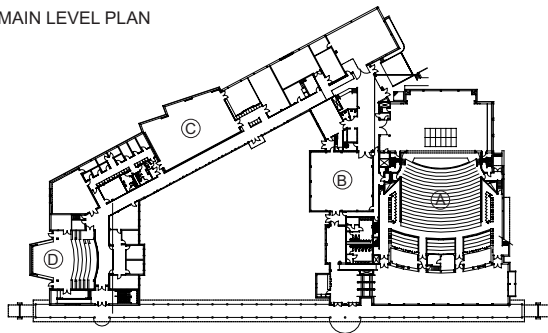
LONGITUDINAL SECTION



HALF BALCONY PLAN / REFLECTED CEILING PLAN



MAIN LEVEL PLAN



KEY PLAN

- (A) BROOKS PERFORMANCE HALL
- (B) BLACK BOX THEATER
- (C) BAND REHEARSAL
- (D) RECITAL HALL (WITH DANCE STUDIO ABOVE)

